

## EDITORIALS

 **For Immunoglobulin Light Chains, It's Time to Fly!**  
J.D. Faix (see articles on pages 1334 and 1345) **1293**

**Spotting the Cheaters** M. Bidlingmaier (see article on page 1353) **1296**

 **Continuous Improvement in Continuous Quality Control** S.T. Bennett (see article on page 1361) **1299**

## PERSPECTIVE

**Individualizing Immunosuppressive Therapy for Transplant Patients** L.J. Langman and P.J. Jannetto **1302**

## Q&A

**CRISPR-Cas9 System: Opportunities and Concerns**  
Moderators: S.K. Vasiliou and E.P. Diamandis;  
Experts: G.M. Church, H.T. Greely, F. Baylis,  
C. Thompson, and G. Schmitt-Ulms **1304**

## CLINICAL CASE STUDY

**An Infertile Patient with Abnormal Thyroid-Stimulating Hormone** S.F. Mok, E.S. Tai, D.S. Deepak, and T.P. Loh **1312**

**Commentary**  
T. Baranski **1316**


**Commentary**  
A. Algeciras-Schimmich **1316**

## REVIEW

**MicroRNA Theranostics in Prostate Cancer Precision Medicine** F. Matin, V. Jeet, J.A. Clements, G.M. Yousef, and J. Batra **1318**

## ARTICLES

### CLINICAL IMMUNOLOGY

 **Comprehensive Assessment of M-Proteins Using Nanobody Enrichment Coupled to MALDI-TOF Mass Spectrometry** J.R. Mills, M.C. Kohlhagen, S. Dasari, P.M. Vanderboom, R.A. Kyle, J.A. Katzmman, M.A.V. Willrich, D.R. Barnidge, A. Dispenzieri, and D.L. Murray (see editorial on page 1293) **1334**

**Screening Method for M-Proteins in Serum Using Nanobody Enrichment Coupled to MALDI-TOF Mass Spectrometry** M.C. Kohlhagen, D.R. Barnidge, J.R. Mills, J. Stoner, K.M. Gurtner, A.M. Liptac, D.I. Lofgren, P.M. Vanderboom, A. Dispenzieri, J.A. Katzmman, M.A.V. Willrich, M.R. Snyder, and D.L. Murray (see editorial on page 1293) **1345**

### DRUG MONITORING AND TOXICOLOGY

**Determination of Recent Growth Hormone Abuse Using a Single Dried Blood Spot**  
G. Reverter-Branchat, J. Bosch, J. Vall, M. Farré, E. Papaseit, S. Pichini, and J. Segura (see editorial on page 1296) **1353**

### AUTOMATION AND ANALYTICAL TECHNIQUES

**Optimization of a Moving Averages Program Using a Simulated Annealing Algorithm: The Goal is to Monitor the Process Not the Patients** D. Ng, F.A. Polito, and M.A. Cervinski (see editorial on page 1299) **1361**

### PROTEOMICS AND PROTEIN MARKERS

**Prognostic Utility of Galectin-3 for Recurrent Cardiovascular Events During Long-term Follow-up in Patients with Stable Coronary Heart Disease: Results of the KAROLA Study** H. Jansen, W. Koenig, A. Jaensch, U. Mons, L.P. Breitling, H. Scharnagl, T. Stojakovic, H. Schunkert, H. Brenner, and D. Rothenbacher **1372**

**Prognostic Value of Secretoneurin in Patients with Acute Respiratory Failure: Data from the FINNALI Study** P.L. Myhre, A.H. Ottesen, M. Okkonen, R. Linko, M. Stridsberg, S. Nygård, G. Christensen, V. Pettilä, T. Omland, and H. Røsjø, on behalf of the FINNALI Laboratory Study Group **1380**

### CANCER DIAGNOSTICS

**A Nanoparticle-Lectin Immunoassay Improves Discrimination of Serum CA125 from Malignant and Benign Sources** K. Gidwani, K. Huhtinen, H. Kekki, S. van Vliet, J. Hynninen, N. Koivuviita, A. Perheentupa, M. Poutanen, A. Auranen, S. Grenman, U. Lamminmäki, O. Carpen, Y. van Kooyk, and K. Pettersson **1390**

*continued*

## ARTICLES, *continued*

### MOLECULAR DIAGNOSTICS AND GENETICS

- Group Testing Approach for Trinucleotide Repeat Expansion Disorder Screening** K.E. Kaseniit, M.R. Theilmann, A. Robertson, E.A. Evans, and I.S. Haque **1401**

### CORRECTION

- Complex Reference Values for Endocrine and Special Chemistry Biomarkers across Pediatric, Adult, and Geriatric Ages: Establishment of Robust Pediatric and Adult Reference Intervals on the Basis of the Canadian Health Measures Survey** K. Adeli, V. Higgins, M. Nieuwesteeg, J.E. Raizman, Y. Chen, S.L. Wong, and D. Blais **1409**

### CLINICAL CHEMIST

#### GENETIC METABOLIC SERIES

- Increased C3 Acylcarnitine Concentration in a Newborn** R.W.A. Peake **1410**

#### WHAT IS YOUR GUESS?

- Three Patients with an Unusual Pattern on Urine Immunofixation** T. Schiemsky, J. Wils, K. Hoet, and K. Poesen **1412**

- An Abrupt Hepatitis B Seroconversion** S.-Y. Lo, N.H. Saifee, and D.N. Greene **1414**

- Where Has All the Hemoglobin A<sub>1c</sub> Gone?** F. Gerin and C. Sezgin **1415**

#### NEWS & VIEWS

- Navigating Misconduct in Research Oversight** M.A. Marzinke **1416**

- Canadian Hypertension Education Program Recommends the Use of Nonfasting Lipid Panels for Routine Laboratory Workup** Y. Kataria **1418**

#### UNVEILING THE RIGHT SIDE

- Interpretation of Jo Ractliffe's *Drying fish on the beach at Ilha* in Pen and Ink** N. Rifai **1419**

### SCIENCE IN THE ARTS

- Botanical Books, Taxonomy, and the Art of Georgia O'Keeffe** M.H. Dominiczak **1420**

### ONLINE CONTENT

#### JOURNAL CLUB

Selected articles made freely available, including helpful slides and key points for discussion in your Journal Club. The article links below provide free access to both the articles and Journal Club content.

- Alcohol Consumption and Cardiac Biomarkers: The Atherosclerosis Risk in Communities (ARIC) Study** Mariana Lazo, Yuan Chen, John W. McEvoy, Chiadi Ndumele, Suma Konety, Christie M. Ballantyne, A. Richey Sharrett, and Elizabeth Selvin  
[www.clinchem.org/content/62/9/1202.full](http://www.clinchem.org/content/62/9/1202.full)

#### PEARLS OF LABORATORY MEDICINE

*Clinical Chemistry* Trainee Council (CCTC) is a free online program for residents and fellows in laboratory medicine. The program provides a wealth of free educational materials and interactive tools, including Podcasts, Guide to Scientific Writing, Question Bank, Pearls of Laboratory Medicine, and much more. The Pearls are brief presentations on one key topic succinctly presented using slides, audio, and transcript supplements.

Join the CCTC today ([traineecouncil.org](http://traineecouncil.org)) for free access to the following Pearls of Laboratory Medicine. With nearly 100 Pearls now available, 5 are highlighted here.

John R. Mills  
Variants of Uncertain Significance  
10.15428/CCTC.2016.254276

Chesinta B. Voma  
Lactate Dehydrogenase: Analytical Aspects  
10.15428/CCTC.2015.248500

Gregory J. Berry  
Diagnosis of Syphilis Using the Reverse Algorithm  
10.15428/CCTC.2015.252692

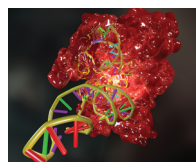
Y. Victoria Zhang  
Liquid Chromatography: LC Basics and Separation Techniques  
10.15428/CCTC.2015.240044

Y. Victoria Zhang  
Liquid Chromatography: Separation Mechanisms  
10.15428/CCTC.2015.244665

*continued*

## ACCENT®—CONTINUING EDUCATION CREDIT FOR READERS OF CLINICAL CHEMISTRY

For more information go to <http://www.aacc.org/education-and-career/clinical-chemistry-journal-continuing-education-credits>



**ON THE COVER** The CRISPR-Cas9 system. This revolutionary genome-editing tool can be used to remove, add, or replace any genome sequence. The ease of use and multiplexing capacity of CRISPR-Cas9 has enabled scientists to apply this system for genome modifications in a variety of organisms, like *Drosophila*, zebrafish, mosquitoes, mice, primates, and humans. But the ability to alter the genome of any organism, including human embryos, creates challenges as well as opportunities. This month's issue of *Clinical Chemistry* contains a Q&A in which 5 experts discuss the capabilities of the CRISPR-Cas9 system in editing genomes and the associated ethical concerns. (See page 1304.) Reproduced with permission ©Arkitek Scientific [www.arkitek.com](http://www.arkitek.com).



Technology Corner, podcasts, color figures for Reviews, and Clinical Chemistry Trainee Council sponsored by Department of Laboratory Medicine, Boston Children's Hospital.



Clinical Chemistry podcast coming soon to <http://www.clinchem.org>.



Individual articles may be selected to be a part of the Fast Track Program. Articles receive an expedited review, decision, and, if accepted, rapid online publication.



Video available at <http://www.clinchem.org>.



Follow us on Twitter  
[http://twitter.com/Clin\\_Chem\\_AACC](http://twitter.com/Clin_Chem_AACC)



Like us on Facebook  
<http://www.facebook.com/AACCJournals>



Clinical Chemistry apps available on iPhone, iPad, and Android.