

INTRODUCTION

-  **Impact of Biomarkers, Proteomics, and Genomics in Cardiovascular Disease** F.S. Apple, S. Blankenberg, and D.A. Morrow 1

EDITORIALS

- Growth Differentiation Factor 15: A Canary in a Coal Mine?** J.E. Ho and T.J. Wang ([see article on page 172](#)) 3
- Statins, Plasma Proprotein Convertase Subtilisin/Kexin Type 9 Concentrations, and LDL Lowering** A. Khera ([see article on page 183](#)) 6
- Delta Cardiac Troponin Values in Practice: Are We Ready to Move Absolutely Forward to Clinical Routine?** F.S. Apple and D.A. Morrow ([see article on page 209](#)) 8

INTERVIEW

- An Interview with Dr. Eugene Braunwald** M. Landau 11

REFLECTION

- Reflections on the Evolution of Cardiac Biomarkers** J.H. Ladenson 21

PERSPECTIVES

- A Novel Technology for Measuring Cumulative Cardiac Biomarker Exposure over Time: What Happened When We Weren't Looking?** C. deFilippi 25
- Within Sight of a Rational Pipeline for Development of Protein Diagnostics** L. Anderson 28

Q&A

-  **The Challenges and Concerns Companies Face Pertaining to the US Food and Drug Administration 510(k) Process for Cardiac Biomarkers** Moderators: F.S. Apple and D. Morrow; Experts: C. Zaugg, D. Hickey, M. Zaharik, J.J. Blackwood, and K. Jakobsen 31

CLINICAL CASE STUDY

- Interpreting Changes in Troponin—Clinical Judgment Is Essential** H.A. Katus, E. Giannitsis, and A.S. Jaffe 39

COMMENTARIES

- S.W. Sharkey 43
- J. Ordonez-Llanos 44

MINI-REVIEWS

- Biomarkers in Cardiovascular Clinical Trials: Past, Present, Future** S.A. Halim, L.K. Newby, and E.M. Ohman 45
- Analytical Characteristics of High-Sensitivity Cardiac Troponin Assays** F.S. Apple and P.O. Collinson, for the IFCC Task Force on Clinical Applications of Cardiac Biomarkers 54

REVIEWS

- Use of Natriuretic Peptides to Guide and Monitor Heart Failure Therapy** A.M. Richards and R.W. Troughton 62
- Biomarkers and Cardiovascular Risk Assessment for Primary Prevention: An Update** L.G. Gilstrap and T.J. Wang 72
- B-Type Natriuretic Peptide: From Posttranslational Processing to Clinical Measurement** J.P. Goetze 83
- Genomewide Association Studies in Cardiovascular Disease—An Update 2011** T. Zeller, S. Blankenberg, and P. Diemert 92
- 9p21 and the Genetic Revolution for Coronary Artery Disease** R. Roberts and A.F.R. Stewart 104
- Next Steps in Cardiovascular Disease Genomic Research—Sequencing, Epigenetics, and Transcriptomics** R.B. Schnabel, A. Baccarelli, H. Lin, P.T. Ellinor, and E.J. Benjamin 113
- Emerging Biomarkers in Heart Failure** R.R.J. van Kimmenade and J.L. Januzzi, Jr. 127
- Metabolomics and Cardiovascular Biomarker Discovery** E.P. Rhee and R.E. Gerszten 139

OPINIONS





- Troponin Release—Reversible or Irreversible Injury? Should We Care?** A.S. Jaffe and A.H.B. Wu 148

continued

OPINIONS, *continued*



- Are There Really Biomarkers of Vulnerable Plaque?
B. Lindahl 151
- Clopidogrel and CYP2C19 Testing: Ready for Clinical
Prime Time? J.-S. Hulot, R. Hajjar, and
G. Montalescot 154

POINT/COUNTERPOINT

-  Point: Detection of Myocardial Infarction—Is It All
Troponin? E. Giannitsis and H.A. Katus 158
-  Counterpoint: Detection of Myocardial Infarction—
Is It All Troponin? Role of New Markers C. Mueller 162
-  Point: Put Simply, Standardization of Cardiac
Troponin I Is Complicated R.H. Christenson,
D.M. Bunk, H. Schimmel, and J.R. Tate, on behalf of
the IFCC Working Group on Standardization of
Troponin I 165
-  Counterpoint: Standardization of Cardiac Troponin I
Assays Will Not Occur in My Lifetime F.S. Apple 169

ARTICLES


LIPIDS, LIPOPROTEINS, AND CARDIOVASCULAR RISK FACTORS

-  Association of Growth Differentiation Factor-15
with Coronary Atherosclerosis and Mortality in a
Young, Multiethnic Population: Observations from
the Dallas Heart Study A. Rohatgi, P. Patel, S.R. Das,
C.R. Ayers, A. Khera, A. Martinez-Rumayor,
J.D. Berry, D.K. McGuire, and J.A. de Lemos (see
editorial on page 3) 172
-  Rosuvastatin, Proprotein Convertase
Subtilisin/Kexin Type 9 Concentrations, and LDL
Cholesterol Response: the JUPITER Trial Z. Awan,
N.G. Seidah, J.G. MacFadyen, S. Benjannet,
D.I. Chasman, P.M. Ridker, and J. Genest (see
editorial on page 6) 183

- Cystatin C and Estimated Glomerular Filtration Rate
as Predictors for Adverse Outcome in Patients with
ST-Elevation and Non-ST-Elevation Acute Coronary
Syndromes: Results from the Platelet Inhibition and
Patient Outcomes Study A. Åkerblom, L. Wallentin,
A. Siegbahn, R.C. Becker, A. Budaj, K. Buck,
E. Giannitsis, J. Horrow, S. Husted, H.A. Katus,
P.G. Steg, R.F. Storey, N. Åsenblad, and S.K. James 190

- Circulating Troponin As Measured by a Sensitive
Assay for Cardiovascular Risk Assessment in
Primary Prevention D.M. Leistner, J. Klotsche,
L. Pieper, G.K. Stalla, H. Lehnert, S. Silber, W. März,
H.-U. Wittchen, and A.M. Zeiher, for the DETECT
Study Group 200

PROTEOMICS AND PROTEIN MARKERS

- Absolute and Relative Kinetic Changes of High-
Sensitivity Cardiac Troponin T in Acute Coronary
Syndrome and in Patients with Increased Troponin
in the Absence of Acute Coronary Syndrome 
M. Mueller, M. Biener, M. Vafaie, S. Doerr, T. Keller,
S. Blankenberg, H.A. Katus, and E. Giannitsis (see
editorial on page 8) 209

- Influence of Population Selection on the 99th
Percentile Reference Value for Cardiac Troponin
Assays P.O. Collinson, Y.M. Heung, D. Gaze, F. Boa,
R. Senior, R. Christenson, and F.S. Apple 219

- Midregional Proadrenomedullin for Prediction of
Cardiovascular Events in Coronary Artery Disease:
Results from the AtheroGene Study P.S. Wild,
R.B. Schnabel, E. Lubos, T. Zeller, C.R. Sinning,
T. Keller, S. Tzikas, K.J. Lackner, D. Peetz,
H.J. Rupprecht, C. Bickel, N.G. Morgenthaler,
J. Papassotiriou, L. Tiret, T. Münzel, and
S. Blankenberg 226

- Diagnostic Accuracy of Plasma Glial Fibrillary Acidic
Protein for Differentiating Intracerebral
Hemorrhage and Cerebral Ischemia in Patients with
Symptoms of Acute Stroke C. Foerch, M. Niessner,
T. Back, M. Bauerle, G.M. De Marchis, A. Ferbert,
H. Grehl, G.F. Hamann, A. Jacobs, A. Kastrup,
S. Klimpe, F. Palm, G. Thomalla, H. Worthmann, and
M. Sitzer, on behalf of the BE FAST Study Group 237

continued

ARTICLES, *continued*

- Markers of Plaque Instability in the Early Diagnosis and Risk Stratification of Acute Myocardial Infarction** N. Schaub, T. Reichlin, C. Meune, R. Twerenbold, P. Haaf, W. Hochholzer, N. Niederhauser, P. Bosshard, C. Stelzig, M. Freese, M. Reiter, J. Gea, A. Buser, A. Mebazaa, S. Osswald, and C. Mueller 246
- Role of ST2 in Non–ST-Elevation Acute Coronary Syndrome in the MERLIN-TIMI 36 Trial** P. Kohli, M.P. Bonaca, R. Kakkar, A.Y. Kudinova, B.M. Scirica, M.S. Sabatine, S.A. Murphy, E. Braunwald, R.T. Lee, and D.A. Morrow 257
- Galectin-3 and the Development of Heart Failure after Acute Coronary Syndrome: Pilot Experience from PROVE IT-TIMI 22** E.W. Grandin, P. Jarolim, S.A. Murphy, L. Ritterova, C.P. Cannon, E. Braunwald, and D.A. Morrow 267
- Concordance, Variance, and Outliers in 4 Contemporary Cardiac Troponin Assays: Implications for Harmonization** J.P.J. Ungerer, L. Marquart, P.K. O'Rourke, U. Wilgen, and C.J. Pretorius 274
- Troponin T Measurements by High-Sensitivity vs Conventional Assays for Risk Stratification in Acute Dyspnea** S. van Wijk, L. Jacobs, L.W. Eurlings, R. van Kimmenade, R. Lemmers, P. Broos, O. Bekers, M.H. Prins, H.J. Crijns, Y.M. Pinto, M.P. van Dieijen-Visser, and H.-P. Brunner-La Rocca 284

BRIEF COMMUNICATIONS

- Comparison of Midregional Pro–A-Type Natriuretic Peptide and the N-Terminal Pro–B-Type Natriuretic Peptide for Predicting Mortality and Cardiovascular Events** K.J.J. van Hateren, A. Alkhalaf, N. Kleefstra, K.H. Groenier, P.E. de Jong, D. de Zeeuw, R.O.B. Gans, J. Struck, H.J.G. Bilo, R.T. Gansevoort, and S.J.L. Bakker 293
- Biomarkers for Predicting Serious Cardiac Outcomes at 72 Hours in Patients Presenting Early after Chest Pain Onset with Symptoms of Acute Coronary Syndromes** P.A. Kavsak, S.A. Hill, W.B. Supapol, P.J. Devereaux, and A. Worster 298

CITATION CLASSIC

- Aspirin in the Primary Prevention of Myocardial Infarction** C.H. Hennekens 303

LETTERS TO THE EDITOR

- Evidence-Based Laboratory Medicine: How Well Do Laboratories Follow Recommendations and Guidelines? The Cardiac Marker Guideline Uptake in Europe (CARMAGUE) Study** P.O. Collinson, M.P. van Dieijen-Visser, K. Pulkki, A. Hammerer-Lercher, J. Suvisaari, J. Ravkilde, A. Stavljenic-Rukavina, H. Baum, and P. Laitinen 305
- Copeptin Adds to High-Sensitivity Troponin T in Rapid Rule Out of Acute Myocardial Infarction** M. Möckel 306
- Copeptin—A Novel Marker in Acute Myocardial Infarction** S. von Haehling, T. Stojakovic, and B. Bigalke 307
- In Reply** M. Karakas, J.L. Januzzi, Jr., U. Hoffmann, and W. Koenig 309
- High-Sensitivity Cardiac Troponin Assays—Change Is Important** P.A. Kavsak and A.S. Jaffe 311
- In Reply** S.J. Aldous, A.M. Richards, L. Cullen, and M.P. Than 313

CLINICAL CHEMIST

UNVEILING THE RIGHT SIDE

- A Heart-to-Heart Talk** U. Anand 315

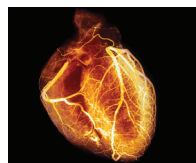
SCIENCE IN THE ARTS

- William Harvey and the Undercurrents of Science** M.H. Dominiczak 317

continued

ACCENT®—CONTINUING EDUCATION CREDIT FOR READERS OF CLINICAL CHEMISTRY

For more information go to
<http://www.aacc.org/applications/ccjaccent>



ON THE COVER Angiogram of a Healthy Heart. This special issue of *Clinical Chemistry* provides a comprehensive summation of the current and future impact of biomarkers, proteomics, and genomics in cardiovascular disease. In addition to reviews and original research reports, this special issue contains 3 opinion articles, a perspective, 2 point/counterpoint features, and 3 editorials. Additionally, the human side of the scientific study of cardiovascular disease is covered in a historical reflection on the evolution of cardiac biomarkers for the detection of acute myocardial infarction and an interview with Dr. Eugene Braunwald that captures the essence of this prominent cardiologist and scientist who has demonstrated a great zeal for life and provided an exceptionally strong role model for growing interdisciplinary partnerships between cardiology and laboratory medicine. In short, there is something for everyone in this issue. ©2011 Photo Researchers, Inc. Reproduced with permission.



Technology Corner and color figures for Reviews sponsored by Department of Laboratory Medicine, Children's Hospital Boston.



Clinical Chemistry podcast available at
<http://www.clinchem.org/>

Clinical Chemistry Journal Club

Selected articles made freely available, including helpful slides and key points for discussion in your Journal Club.

Long-Term Biological Variation of Serum Protein Electrophoresis M-Spike, Urine M-Spike, and Monoclonal Serum Free Light Chain Quantification: Implications for Monitoring Monoclonal Gammopathies J.A. Katzmann, M.R. Snyder, S.V. Rajkumar, R.A. Kyle, T.M. Therneau, J.T. Benson, and A. Dispenzieri

<http://www.clinchem.org/cgi/content/article/57/12/1687>

Access the article by using the link above and by selecting Supplemental Data and Journal Club in the right-hand column.



Clinical Chemistry is now on Twitter, Facebook, and LinkedIn. Be a part of our community and receive updates on the latest issues, upcoming articles, podcasts, and more!