


EDITORIALS

 **International Year of Chemistry 2011: *Clinical Chemistry* Celebrates** N. Rifai, T. Annesley, and J. Boyd 1783

Improving the Biomarker Pipeline C.H. Borchers and C.E. Parker (see article on page 1804) 1786

PERSPECTIVE

The B Cell in Atherosclerosis: Teaming Up with the Bad Guys? J. Nilsson and G.N. Fredrikson 1789

CLINICAL CASE STUDY

Difficulty Measuring Methotrexate in a Patient with High-Dose Methotrexate-Induced Nephrotoxicity M.R. Al-Turkmani, T. Law, A. Narla, and M.D. Kellogg 1792

COMMENTARIES

E. Fox and F.M. Balis 1795


M.C. Milone 1795

REVIEW

Analytical Ancestry: Evolution of the Array in Analysis L.J. Kricka, K. Imai, and P. Fortina 1797

ARTICLES

PROTEOMICS AND PROTEIN MARKERS

 **Simultaneous Quantification of Apolipoprotein A-I and Apolipoprotein B by Liquid-Chromatography–Multiple-Reaction–Monitoring Mass Spectrometry** S.A. Agger, L.C. Marney, and A.N. Hoofnagle (see editorial on page 1786) 1804

Importance of Biomarkers for Long-Term Mortality Prediction in Acutely Dyspneic Patients J.L. Januzzi, Jr., S. Rehman, T. Mueller, R.R.J. van Kimmenade, and D.M. Lloyd-Jones 1814

Characterization of Molecular Forms of N-Terminal B-Type Natriuretic Peptide In Vitro M. Ala-Kopsala, A.-M. Moilanen, J. Rysä, H. Ruskoaho, and O. Vuolteenaho 1822

MOLECULAR DIAGNOSTICS AND GENETICS

Plasma MicroRNA-122 as a Biomarker for Viral-, Alcohol-, and Chemical-Related Hepatic Diseases Y. Zhang, Y. Jia, R. Zheng, Y. Guo, Y. Wang, H. Guo, M. Fei, and S. Sun 1830

ENDOCRINOLOGY AND METABOLISM

Falsely Decreased Human Chorionic Gonadotropin (hCG) Results Due to Increased Concentrations of the Free β Subunit and the β Core Fragment in Quantitative hCG Assays D.G. Grenache, D.N. Greene, A.S. Dighe, C.R. Fantz, D. Hoefner, C. McCudden, L. Sokoll, C.L. Wiley, and A.M. Gronowski 1839

AUTOMATION AND ANALYTICAL TECHNIQUES

Automated Extraction of DNA and RNA from a Single Formalin-Fixed Paraffin-Embedded Tissue Section for Analysis of Both Single-Nucleotide Polymorphisms and mRNA Expression G. Hennig, M. Gehrmann, U. Stropp, H. Brauch, P. Fritz, M. Eichelbaum, M. Schwab, and W. Schroth 1845

A Tandem Mass Spectrometry Triplex Assay for the Detection of Fabry, Pompe, and Mucopolysaccharidosis-I (Hurler) T.A. Duffey, G. Bellamy, S. Elliott, A.C. Fox, M. Glass, F. Turecek, M.H. Gelb, and C.R. Scott 1854

CANCER DIAGNOSTICS

A Bioluminescent Microbial Biosensor for In Vitro Pretreatment Assessment of Cytarabine Efficacy in Leukemia H.M. Alloush, E. Anderson, A.D. Martin, M.W. Ruddock, J.E. Angell, P.J. Hill, P. Mehta, M.A. Smith, J.G. Smith, and V.C. Salisbury 1862

continued

ARTICLES, continued

Expression Profile of MicroRNAs in Serum: A Fingerprint for Esophageal Squamous Cell Carcinoma C. Zhang, C. Wang, X. Chen, C. Yang, K. Li, J. Wang, J. Dai, Z. Hu, X. Zhou, L. Chen, Y. Zhang, Y. Li, H. Qiu, J. Xing, Z. Liang, B. Ren, C. Yang, K. Zen, and C.-Y. Zhang 1871

GENERAL CLINICAL CHEMISTRY

Characterization of the New Serum Protein Reference Material ERM-DA470k/IFCC: Value Assignment by Immunoassay I. Zegers, T. Keller, W. Schreiber, J. Sheldon, R. Albertini, S. Blirup-Jensen, M. Johnson, S. Trapmann, H. Emons, G. Merlini, and H. Schimmel 1880

BRIEF COMMUNICATION

CA125 Immune Complexes in Ovarian Cancer Patients with Low CA125 Concentrations D.W. Cramer, D.J. O'Rourke, A.F. Vitonis, U.A. Matulonis, D.A. DiJohnson, P.M. Sluss, C.P. Crum, and B.C.-S. Liu 1889

BOOKSHELF

Point-of-Care Testing: Needs, Opportunity, and Innovation, 3rd Edition, by Christopher P. Price, Andrew St John, and Larry J. Kricka, eds. Reviewed by D. Unold and J.H. Nichols 1893

CITATION CLASSIC

Detection of Complexes between Prostate-Specific Antigen and Protease Inhibitors in Plasma U.-H. Stenman 1895

LETTERS TO THE EDITOR

Interference of Monoclonal Antibody Therapies with Serum Protein Electrophoresis Tests C.R. McCudden, P.M. Voorhees, S.A. Hainsworth, H.C. Whinna, J.F. Chapman, C.A. Hammett-Stabler, and M.S. Willis 1897

Specificity of Serum and Urine Protein Electrophoresis for the Diagnosis of Monoclonal Gammopathies J.A. Katzmann, T.J. Stankowski-Drengler, R.A. Kyle, K.S. Lockington, M.R. Snyder, J.A. Lust, and A. Dispenzieri 1899

Improved GC-MS Procedure for Simultaneous Measurement of Ethylene Glycol and Glycolic Acid W.H. Porter and P.W. Rutter 1900

Increasing Cardiac Troponin Changes Measured by a Research High-Sensitivity Troponin I Assay: Absolute vs Percentage Changes and Long-Term Outcomes in a Chest Pain Cohort P.A. Kavsak, D.T. Ko, X. Wang, A.R. MacRae, and A.S. Jaffe 1902

CLINICAL CHEMIST

WHAT IS YOUR GUESS?
A Donor Going Green R. Jackups, Jr. and B.J. Grossman 1905

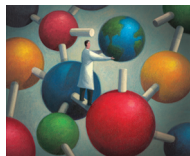
NEWS & VIEWS
Clinical Chemistry's Invited Reviewers 2010 1906

"Reaching Out to the World" Appreciation 1908

UNVEILING THE RIGHT SIDE
Oak Tree in Fog K.A. Matz 1910

ACCENT®—CONTINUING EDUCATION CREDIT FOR READERS OF CLINICAL CHEMISTRY

For more information go to <http://www.aacc.org/applications/ccaccent>



ON THE COVER The global impact of chemistry. The year 2011 has been designated as the International Year of Chemistry. Throughout the next year *Clinical Chemistry* will help celebrate this occasion by publishing several articles and new features that are prepared by inspiring scientists and award-winning writers and that highlight various aspects of our profession. A description of these special features is provided in the editorial on page 1783. We hope you will enjoy these future articles and help to celebrate with us the profession that we practice and love. ©Image reproduced with permission by Laughing Stock/Corbis; Creator George Schill.

Color figures for Reviews sponsored by Department of Laboratory Medicine, Children's Hospital Boston.



Clinical Chemistry podcast available at <http://www.clinchem.org/>

Clinical Chemistry Journal Club

Selected articles made freely available, including helpful slides and key points for discussion in your Journal Club.

Plasma Renin Activity by LC-MS/MS: Development of a Prototypical Clinical Assay Reveals a Subpopulation of Human Plasma Samples with Substantial Peptidase Activity Cory E. Bystrom, Wael Salameh, Richard Reitz, and Nigel J. Clarke
<http://www.clinchem.org/cgi/reprint/56/10/1561>

Access the article by using the link above and by selecting Supplemental Data and Journal Club in the right-hand column.



Clinical Chemistry is now on Twitter, Facebook, and LinkedIn. Be a part of our community and receive updates on the latest issues, upcoming articles, podcasts, and more!