

EDITORIAL

- Protein Microarrays Address the Elephant in the Room** M.G. Kattah, P.J. Utz, and I. Balboni (see article on page 956) **937**

PERSPECTIVES

- After ENHANCE: Is More LDL Cholesterol Lowering Even Better?** E.A. Stein **940**
- MicroRNA Signatures as Diagnostic and Therapeutic Targets** S.A. Waldman and A. Terzic **943**

REVIEW

- The Perfect Storm: Obesity, Adipocyte Dysfunction, and Metabolic Consequences** S. de Ferranti and D. Mozaffarian **945**

ARTICLES

AUTOMATION AND ANALYTICAL TECHNIQUES

- Expanding Assay Dynamics: A Combined Competitive and Direct Assay System for the Quantification of Proteins in Multiplexed Immunoassays** M. Hartmann, M. Schrenk, A. Döttinger, S. Nagel, J. Roeraade, T.O. Joos, and M.F. Templin (see editorial on page 937) **956**

MOLECULAR DIAGNOSTICS AND GENETICS

- Single-Step Scalable-Throughput Molecular Screening for Huntington Disease** C.R.L. Teo, W. Wang, H.Y. Law, C.G. Lee, and S.S. Chong **964**
- Log-PCR: A New Tool for Immediate and Cost-Effective Diagnosis of up to 85% of Dystrophin Gene Mutations** A. Trimarco, A. Torella, G. Piluso, V.M. Ventriglia, L. Politano, and V. Nigro **973**
- Rapid and Sensitive Detection of *BRCA1/2* Mutations in a Diagnostic Setting: Comparison of Two High-Resolution Melting Platforms** K. De Leeneer, I. Coene, B. Poppe, A. De Paepe, and K. Claes **982**
- Design and Application of Noncontinuously Binding Probes Used for Haplotyping and Genotyping** G. Pont-Kingdon, R.L. Margraf, K. Sumner, A. Millson, E. Lyon, and E. Schütz **990**
- Cell-Free Plasma DNA as a Predictor of Outcome in Severe Sepsis and Septic Shock** K. Saukkonen, P. Lakkisto, V. Pettilä, M. Varpula, S. Karlsson, E. Ruokonen, K. Pulkki, for the Finnsepsis Study Group **1000**

DRUG MONITORING AND TOXICOLOGY

- Affinity Maturation of Tacrolimus Antibody for Improved Immunoassay Performance** R.W. Siegel, W. Baugher, T. Rahn, S. Drenkler, and J. Tyner **1008**

ENDOCRINOLOGY AND METABOLISM

- Modified HPLC-Electrospray Ionization/Mass Spectrometry Method for HbA_{1c} Based on IFCC Reference Measurement Procedure** P. Kaiser, T. Akerboom, P. Molnar, and H. Reinauer **1018**
- Standardization of C-Peptide Measurements** R.R. Little, C.L. Rohlfing, A.L. Tennill, R.W. Madsen, K.S. Polonsky, G.L. Myers, C.J. Greenbaum, J.P. Palmer, E. Rogatsky, and D.T. Stein **1023**

LIPIDS, LIPOPROTEINS, AND CARDIOVASCULAR RISK FACTORS

- Ethnic Differences in C-Reactive Protein Concentrations** A. Kelley-Hedgpepeth, D.M. Lloyd-Jones, A. Colvin, K.A. Matthews, J. Johnston, M.R. Sowers, B. Sternfeld, R.C. Pasternak, and C.U. Chae, for the SWAN Investigators **1027**
- Plasma PCSK9 Concentrations Correlate with LDL and Total Cholesterol in Diabetic Patients and Are Decreased by Fenofibrate Treatment** G. Lambert, N. Ancellin, F. Charlton, D. Comas, J. Pilot, A. Keech, S. Patel, D.R. Sullivan, J.S. Cohn, K.-A. Rye, and P.J. Barter **1038**
- Joint Effects of Antibody to Heat Shock Protein 60, Hypertension, and Diabetes on Risk of Coronary Heart Disease in Chinese** X. Zhang, M.-A. He, L. Cheng, L. Zhou, H. Zeng, J. Wang, F. Wang, Y. Chen, F.B. Hu, and T. Wu **1046**

HEMATOLOGY

- Detection of a Thalassemic α -Chain Variant (Hemoglobin Groene Hart) by Reversed-Phase Liquid Chromatography** I. Zanella-Cleon, M. Becchi, P. Lacan, P.C. Giordano, H. Wajcman, and A. Francina **1053**

HEMOSTASIS AND THROMBOSIS

- Aspirin Responsiveness in Healthy Volunteers Measured with Multiple Assay Platforms** B.S. Karon, A. Wockenfus, R. Scott, S.J. Hartman, J.P. McConnell, P.J. Santrach, and A.S. Jaffe **1060**

continued

ARTICLES, *continued*

PROTEOMICS AND PROTEIN MARKERS

- Monomeric Calgranulins Measured by SELDI-TOF Mass Spectrometry and Calprotectin Measured by ELISA as Biomarkers in Arthritis** D. de Seny, M. Fillet, C. Ribbens, R. Marée, M.-A. Meuwis, L. Lutteri, J.-P. Chapelle, L. Wehenkel, E. Louis, M.-P. Merville, and M. Malaise **1066**

BRIEF COMMUNICATIONS

- Effect of Collection Tube Type and Preanalytical Handling on Myeloperoxidase Concentrations** J. Shih, S.A. Datwyler, S.C. Hsu, M.S. Matias, D.P. Pacenti, C. Lueders, C. Mueller, O. Danne, and M. Möckel **1076**

- Rapid Determination of Monozygous Twinning with a Microfabricated Capillary Array Electrophoresis Genetic-Analysis Device** S.H.I. Yeung, I.L. Medintz, S.A. Greenspoon, and R.A. Mathies **1080**

CITATION CLASSIC

- Importance of Chemical Reduction in Plasma and Serum Homocysteine Analysis** P.M. Ueland **1085**

LETTERS TO THE EDITOR

- Improved HPLC Analysis of Serum 7 α -Hydroxycholest-4-en-3-one, a Marker of Bile Acid Malabsorption** M. Lenicek, M. Juklova, J. Zelenka, J. Kovar, M. Lukas, M. Bortlik, and L. Vitek **1087**

- Unexpected Hemoglobin A Results after an Erythrocyte Exchange: Importance of Specimen Mixing** M.E. Sullivan, A. Carolan, J.T. Perkins, and I.J. Check **1088**

- Insufficient Standardization of a Direct Carbohydrate-Deficient Transferrin Immunoassay** A. Helander and G. Nordin **1090**

- Influence of L-Thyroxine Therapy on Parathyroid Hormone Concentrations** A. Zanglis, D. Andreopoulos, and N. Baziotis **1092**

- Acute Variation of Osteocalcin and Parathyroid Hormone in Athletes after Running a Half-Marathon** G. Lippi, F. Schena, M. Montagnana, G.L. Salvagno, G. Banfi, and G.C. Guidi **1093**

- Rapid Real-Time PCR Detection of *HP^{del}* Directly from Diluted Blood Samples** M. Soejima and Y. Koda **1095**

BOOKSHELF

- Fundamentals of Molecular Diagnostics.** David E. Bruns, Edward R. Ashwood, and Carl A. Burtis, Editors. E. Schneider **1097**

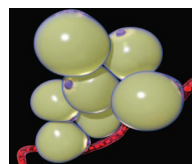
THE CLINICAL CHEMIST

- Implementation of Standardization of Hemoglobin A_{1c} Measurement: Condensed Summary of the Meeting with Manufacturers Held in Milan, Italy, December 12, 2007** **1098**

- Increased Reporting of Estimated Glomerular Filtration Rate and Call for Improved Creatinine Traceability** **1098**

ACCENT®—CONTINUING EDUCATION CREDIT FOR READERS OF CLINICAL CHEMISTRY

For more information go to <http://apps.aacc.org/ccj/accent>



ON THE COVER Fat Cells (adipocytes) from white adipose tissue, with a proximal capillary blood vessel. Adiposity induces multiple adverse local and systemic effects, including intracellular lipid accumulation, endoplasmic reticulum and mitochondrial stress, and insulin resistance. In this issue de Ferranti and Mozaffarian highlight how the imbalance of excess caloric intake and inadequate physical activity has created the “perfect storm” for obesity and its related health consequences. See Review on page 945. Image used with permission. © Russell Knightly

Color figures for Reviews sponsored by Department of Laboratory Medicine, Children’s Hospital Boston.